

## SBC Make-Up Kit Case



**KIT**

### Contains:

- 3 x 3g Concealer Natural, Lilac & Green
- 3 x 30ml Crème Base Foundation Light, Medium and Dark
- 1 x 21.48g Translucent Loose Powder
- 8 x 1.98g Eye Shadows Palest Chocolate, Frosted Khaki Green, Frosted Bronze, Frosted Beige, Matt Charcoal, Frosted Cream, Frosted Purple and Palest Frosted Pink
- 4 x 1.40g Crème Eye Shadows Frosted Creme Silver, Frosted Creme Plum, Frosted Copper and Frosted Creme Olive
- 3 x 3.24g Blushers Matt Blush Peach, Blush Pink and Frosted Pale Peach **New**
- 3 x Eye Emphasiser Black, Brown and Grey
- 2 x 6ml Lash Crème Black and Brown
- 4 x 3.50g Lipsticks Pink Fudge, Plum Peach, Bronze Blush and English Rose
- 4 x Lip Emphasiser Medium Natural, Medium Synthetic, Dark Natural and Dark Synthetic
- 1 x 7.5g Lip gloss Clear
- 1 x 9.18g Liquid Eyeliner Black
- 1 x Professional Mixing Palette
- 8 x Wedges
- 1 x Pencil Sharpener
- 1 x 3.90g Highlighter / Shader
- 1 x 7.31g Bronzer **New**
- 1 x 9 Piece Professional Brush Set
- 5 x Mascara Brushes **New**
- 10 x Disposable Sponge Applicators **New**

3420 Make-Up Kit Case

£50.00

## SBC Foundation Kit

**NEW**

**KIT**



### Contains:

- 3 x 50ml Mousse Foundation Light, Medium and Dark
- 3 x 9g Compact Foundation Light, Medium and Dark
- 3 x 50ml Fluid Foundation Light, Medium and Dark

10971 Foundation Kit

£30.00

## SBC Global Make-Up Kit



### A complementary kit for the darkest skin tones

#### Contains:

- 1 x 50ml Extra Dark Crème Foundation
- 6 x 1.98g Eye shadows Frosted Raspberry, Frosted Purple, Frosted Teal, Frosted Slate Grey, Frosted Khaki Green and Frosted Gold
- 1 x 30ml Dark Crème Foundation
- 3 x 3.50g Lipsticks Hot Pink, Pink Crush and Pink Melba
- 1 x 4g Extra Dark Concealer
- 4 x 3.24g Blushers Blush Pink, Frosted Blush Plum, Frosted Dark Plum and Dark Rust
- 1 x Dark Loose Powder

10972 Global Make-Up Kit

£30.00

## Make-Up Brushes

### Powder Brush No.1



- Luxurious brush designed to use with face powder and sheer finish loose powder
- Dusts just right amount of powder on skin for an even and polished, yet natural look

5326 No.1 £4.50

### Blusher Brush No.2



- Sized to give cheeks a natural look flush
- Brushes on blush without any harsh, difficult to blend lines for a seamless application

5327 No.2 £4.50

### Blending Brush No.3



- Creates a polished look with full coverage

5328 No.3 £4.00

### Contour Brush No.4



- The tapered end of this brush is designed for smudging to create a modern, soft, smoky look

5329 No.4 £3.00

### Angled Eyebrow Brush No.6



- This brush does double-duty, softly lining eyes and filing in and strengthening sparse brows

5331 No.6 £1.75

### Lip Brush No.7



- This tapered brush makes it easy to apply lip colour with precision, and soften lip pencil lines

5332 No.7 £1.75

### Eyeliner Brush No.8



- For use with dark Eye Shadow shades, this brush is perfectly shaded to create a precise and even line

5333 No.8 £1.75

### Eyebrow Comb No.10



- The perfect tool for controlling unruly brows and combing luscious lashes

5335 No.10 £1.50

### Mascara Wand No.11



- Precision tool for grooming the eyelashes

5336 No.11 £1.50

**glōSmoky Eye Kits**

**glōMetallic Smoky Eye Kit**

- Smoky eyes are always on trend and now a simple look to create
- Smoky eye kit includes four essential colors for creating a sultry, metallic smoky eye in a sleek, mirrored compact
- Easy five step application guide



7863 glōMetallic Smoky Eye Kit **RRP £31.70** £13.50

**glōSmoky Eye Kit**

- A kit complete with four essential colours and five easy steps
- Take the mystery out of creating the always chic smoky eye!



7899 glōSmoky Eye Kit **RRP £31.70** £13.50

**glōBlush Magazine**



- Ideal for professional and personal use
- 16 shades

**Panel 1**

- Hibiscus
- Sweet
- Sheer Petal
- Begonia
- Rosebud
- Papaya
- Lilac Silk
- Paradise

**Panel 2**

- Innocent
- Spice Berry
- Sunset
- Terra Cotta
- Nectar
- Sandalwood
- Bare
- Petunia

7862 glōBlush Magazine **£55.00**

**glōPressed Base Magazine**



- Ideal for professional makeup use
- 21 shades

**Panel 1**

- Golden Medium
- Golden Light
- Golden Dark
- Honey Fair
- Honey Dark
- Honey Light
- Honey Medium

**Panel 2**

- Natural Medium
- Natural Light
- Natural Dark
- Beige Light
- Natural Fair
- Beige Medium
- Beige Dark

**Panel 2**

- Cocoa Medium
- Cocoa Light
- Cocoa Dark
- Chestnut Light
- Tawny Medium
- Chestnut Medium
- Tawny Light

7866 glōPressed Base Magazine **£55.00**

**glōEye Shadow Trio Magazine**

- Ideal for professional and personal use
- Contains all shades of glōEye shadow trios as well as four of our most popular glōEye shadow base shades



- Copper Sheen
- Sandstone
- Posh
- Champagne Rose
- Palm
- Mulberry
- Coffee
- Amethyst
- Honey
- Sea Shell
- Bamboo
- Bannana

7865 glōEye Shadow Trio **£58.00**

**glōEye Magazine**



- Ideal for professional and personal use
- Contains all shades of glōEye shadow and the shades from the glō Smokey eye kit

**Panel 1**

- Bamboo
- Fawn
- Banana
- Twig
- Mahogany
- Sable
- Eggplant
- Orchid
- Haze
- Harvest
- Kona
- Diamond

**Panel 2**

- Linen
- Sand Pebble
- Orchid
- Rainforest
- Mink
- Bamboo
- Twinkle
- Lilac
- Water Lily
- Silver Mist
- Mermaid
- Blue Sued

**Panel 2**

- Sand Pebble
- Opal
- Ocean
- Fern
- Somky Eye Base
- Smoky Eye Crease
- Dusk
- Sea Shell
- Diamond
- Twig
- Smoky Eye Lid
- Smoky Eye Liner

7864 glōEye Magazine **£58.00**



## Base Basics

These products are designed to deliver a flawless complexion while improving the health and appearance of the skin and protecting it from the outside-in.

**Free Training**

### glōPressed Base



Coverage: sheer to full  
Finish: semi-matte  
Skin Type: all

- Recommended brushes: Kabuki and Ultra and Powder Brush

Please choose colour when ordering

8987 glōPressed Base 9.9g **RRP £32.00** £15.74

### glōProtective Liquid Foundation



Satin II **1**  
Coverage: sheer to full  
Finish: satin  
Skin Type: all but oily

Matte II **2**  
Coverage: sheer to full  
Finish: matte  
Skin Type: oily

Matte II is ONLY available in Golden-Light, Golden, Beige and Honey

- Recommended brush: Liquid Foundation

9009 Satin II 40ml **RRP £37.00** **1** £18.50  
9026 Matte II 40ml **RRP £30.50** **2** £15.25

### glōLoose Base



Coverage: medium to full  
Finish: dewy  
Skin Type: normal to dry

- Recommended brushes: Kabuki and Ultra

Please choose colour when ordering

9031 glōLoose Base 10.5g **RRP £29.00** £15.32

### glōSheer Tint Base



Coverage: sheer  
Finish: dewy  
Skin Type: all but oily

- Recommended brush: Liquid Foundation

Please choose colour when ordering

9047 glōSheer Tint Base 40ml **RRP £22.00** £11.00

**Free Training**

## Base Basics

### glōPressed Camouflage Oil Free



To camouflage blemishes, scarring, hyperpigmentation or visible skin conditions on the face.

- Recommended brushes: Camouflage and Precision Camouflage

Please choose colour when ordering

9054 glōPressed Camouflage 2g **RRP £20.00** £10.00

### glōConcealer - Under Eye



Includes treatment ingredients to help brighten and improve dark circles under the eyes.

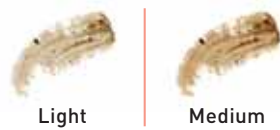
- Recommended brushes: Camouflage and Precision Camouflage

Please choose colour when ordering

9059 glōConcealer - Under Eye 2g **RRP £22.00** £11.00

### glōCoverz-It Stick

Covers and helps heal blemishes with chamomile and salicylic acid



Please choose colour when ordering

9064 glōCoverz-It Stick 11g **RRP £15.00** £7.50

### glōFinishing Powders

Use the glōPerfecting powder for an oil-absorbing translucent matte finish, or the glōMatte finishing powder for subtle matte color.



- Recommended brushes: Powder and Ultra

Please choose colour when ordering

9067 glōFinishing Powders 7.6g **RRP £29.00** £13.62  
9068 glōPerfecting Powders 7.6g **RRP £29.00** £13.62

### glōBrightener Highlight Concealer

Use this must-have under the eyes, the sides of your nose or anywhere you want to brighten or erase shadows



Please choose colour when ordering

9069 glōBrightener Highlight Concealer 1.98g **RRP £11.50** £5.75

### glōFace Primer

Creates an even, ideal canvas for foundation by filling in fine lines and large pores so that foundation goes on looking porcelain smooth.

- Recommended brush: Liquid Foundation



9072 glōFace Primer 14.7ml **RRP £13.00** £6.50

### glōEye Revitalise

Cucumber, squalane and hyaluronic acid cool and hydrate the skin while aloe and linoleic acids work to condition. Goldenseal and juniper offer a temporary "lift" to the delicate eye areas while light reflecting minerals help diminish the appearance of fine lines and work to brighten the eyes.



9074 glōBrightener Highlight Concealer 1.5g **RRP £20.20** £8.85

### glōMoist Hydration Mist

A blend of antioxidants and anti-aging benefits that hydrates instantly. Spray the skin before or after makeup application to set makeup and to refresh the skin throughout the day.



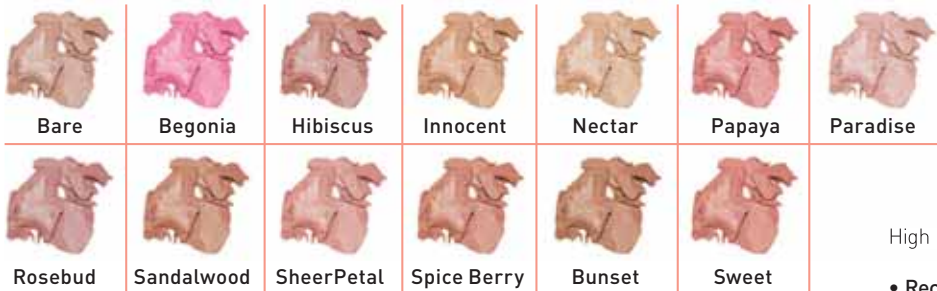
9073 glōMoist Hydration Mist 59ml **RRP £14.00** £7.00



## Cheeks

For every beautiful complexion, there is a perfect blush, a seamless bronzer, or a shimmer powder.

### glōBlush



High pigment color for expert shading and highlighting.

- Recommended brushes: Angled, Blush and Fan

Please choose colour when ordering

9075 glōBlush 3.4g **RRP £14.00** £7.00

### glōShimmer Brick



Four beautiful colors that can be swirled together for a captivating glō or used individually to illuminate key features.

- Recommended brushes: Texture and Fan

9090 glōShimmer Brick 7.4g **RRP £29.00** £13.62

### glōBronze



Seamless color enhancement that adds a warm, natural sun-kissed glō to any complexion.

- Recommended brushes: Angled, Blender, Blush, Fan, Powder and Ultra

9093 glōBronze 1.4g **RRP £32.00** £15.74

## Eyes

### glōEye Shadow



Even sensitive eyes can achieve a dramatic look with these advanced glōminerals formulations.

Rich hues and timeless color favorites deliver crease-free coverage to highlight and enhance eyes.

- Recommended brushes: Angled Eye, Crease, Dual Brow, Eye Base, Eye Contour, Eye Definer, Eye Liner/Brow, Mini Crease and Smudge

Please choose colour when ordering

9096 glōEye Shadow 1.4g **RRP £13.00** £6.50

### glōEye Shadow Trio



Color-perfect eye shadow collections complete with a base, contour and highlight shade.

- Recommended brushes: Crease, Eye Base, Eye Contour, Eye Liner/Brow, Mini Crease and Smudge

Please choose colour when ordering

9124 glōEye Shadow 1.4g **RRP £22.00** £11.00

## Eyes

Free Training

### glōPrecision Eye Pencil

Formulated for even the most sensitive eyes, the colors glide on like silk and never run. Each pencil has an artist's tip on the end to help with smudging and blending as needed.



9135 glōPrecision Eye Pencil **RRP £12.00** £6.00

Please choose colour when ordering

### glōPrecision Brow Pencil

Natural-looking brow enhancement that fills in brows. Each pencil has a versatile brow sculpting brush on the end for 2-in-1 shaping and blending.

• Recommended brush: Dual Brow



9146 glōPrecision Brow Pencil **RRP £12.00** £6.00

Please choose colour when ordering

### glōBrow Powder Duo

Achieve the perfect brow by creating a custom blend of the 2 shades to expertly fill in sparse areas.

• Recommended brushes: Dual Brow and Eye Liner/B row



9151 glōBrow Powder Duo 1.1g **RRP £12.00** £6.00

Please choose colour when ordering

### glōBrow Gel

Provides brow-sculpting control in tinted or clear and instant coverage for unwanted gray or silver hair.

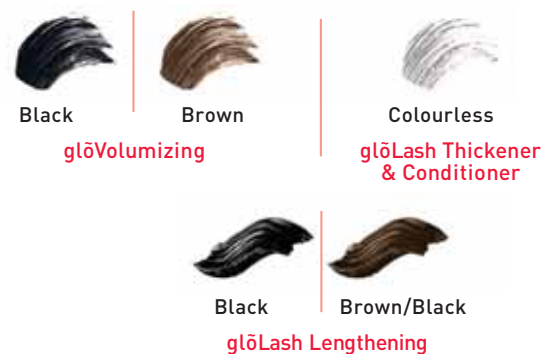


9156 glōBrow Gel 4.1ml **RRP £12.00** £6.00

Please choose colour when ordering

### glōLash Lengthening, Volumizing, Thickener & Conditioner Mascara

glōLash lengthening mascara and glōLash thickener & conditioner are formulated to deliver nutrients and help the lashes grow to their potential. glōVolumizing mascara is formulated with natural fibers to enhance each lash. Lashes will appear fuller and more luscious with one application.



9160-01	glōLash Lengthening Mascara Black	4.1g	<b>RRP £13.00</b>	£6.50
9160-02	glōLash Lengthening Mascara Brown/Black	4.1g	<b>RRP £13.00</b>	£6.50
9163-01	glōVolumising Mascara Black	8.5g	<b>RRP £16.00</b>	£8.00
9163-02	glōVolumising Mascara Brown	8.5g	<b>RRP £16.00</b>	£8.00
9166	glōLash Thickener & Conditioner	8.5g	<b>RRP £13.00</b>	£6.50

Please choose colour when ordering



**Lips** Formulated to deliver full, luscious lips in colors ranging from natural nudes to calypso pink!

**Free Training**

## glōLipstick



A moisturising lip stick that provides vibrant color and remarkable wearability.

• Recommended brushes: Lip Definer

9167 glōLipstick 3.5g RRP £15.00 £7.50

## glōGloss



Color with shine. Use alone, with glōPrecision lip pencils or layer with other lip products for the look of fuller lips.

• Recommended brush: Lip Definer



9183 glōGloss 4.4g RRP £14.00 £7.00

## glōSheer Lipstick



Please choose colour when ordering

An ultra-moisturizing formula that delivers a perfect, subtle lip tint.

9200 glōSheer Lipstick RRP £15.00 £7.50

## glōLiquid Lips



A high shine, luxurious formulation for an ultra-moist look that lasts. Rich nutrients condition and protect the lips.

• Recommended brush: Lip Definer

Please choose colour when ordering

9209 glōLiquid Lips RRP £13.00 £6.50

## glōPrecision Lip Pencil



Please choose colour when ordering

A long wearing, water-resistant liner to define lips and help keep color in place. Each pencil has a lip brush to make blending easy.

• Recommended brush: Lip Definer

9221 glōPrecision Lip Pencil RRP £12.00 £6.00

## glōRoyal Lip Crayon



Please choose colour when ordering



A crayon-inspired, chunky pencil that shades the lips with a moisture rich, long-lasting sheer gloss, and has the precision of a pencil.

9230 glōRoyal Lip Crayon RRP £14.95 £6.50

Brushes



**Angled Eye**

A thick, angled brush used to apply a wash of color to the lid or a heavy contour in the crease of the eye.

- Use with glōEye shadow

9236 RRP £21.00 **1** £10.50

**Blender**

A thick, angled brush used to apply a wash of color to the lid or a heavy contour in the crease of the eye.

- Use with glōEye shadow

9237 RRP £27.00 **2** £13.50

**Blush**

A thick, angled brush used to apply a wash of color to the lid or a heavy contour in the crease of the eye.

- Use with glōEye shadow

9238 RRP £20.00 **3** £10.00

**Camouflage**

Use under the eye area or to cover large areas of pigmentation.

- Use with glōCamouflage, glōConcealer and glōLid primer

9239 RRP £12.00 **4** £6.00

**Crease**

Designed to give a light or heavy contour application to the eye crease.

- Use with glōEye shadow

9240 RRP £21.00 **5** £10.50

**Dual Brow**

A dual headed brush offering stiff bristles to fill in and shape eyebrows. Use the large end all over brows and the smaller end for detail and blending.

- Use with glōPrecision brow pencil, glōBrow powder duo and glōEye shadow

9241 RRP £14.00 **6** £7.00

**Ultra**

Use for all-over base application with medium to full coverage when using the pressed or loose base.

- Use with glōPressed base, glōLoose base, glōBronze and glōFinishing powders

9242 RRP £29.00 **7** £14.50

**Smudge Brush**

Designed for applying eyeliner and eye shadow near the lash line, as well as blending and contouring to create a smoky effect.

- Use with glōEye shadow, glōEye shadow trio and glōSmoky eye kit

9243 RRP £7.00 **8** £3.50



**Eye Base**

Used to apply an eye shadow base color over the entire eyelid.

- Use with glōEye shadow

9244 RRP £15.00 **9** £7.50

**Eye Blender**

A versatile long hair brush with a medium dome that can be used to apply color all over the lid or soften and contour eye colors.

- Use with glōEye shadow

9245 RRP £20.30 **10** £10.16

**Eye Contour**

With a curved head, this is the perfect size brush to apply contour shades to the crease of the eye.

- Use with glōEye shadow

9246 RRP £8.00 **11** £4.00

**Eye Definer**

Perfect for detail shadow application and highlighting under the brow or above the lash line.

- Use with glōEye shadow

9247 RRP £7.00 **12** £3.50

**Eye Liner/Brow**

Use wet or dry with a shadow or a cream liner to define lash line and brows.

- Use with glōCream eyeliner, glōEye shadow and glōBrow powder duo

9248 RRP £11.00 **13** £5.50

**Texture Brush**

This brush is ideal for creating soft layers of shimmer or adding subtle texture to your makeup. The flat top is used for a sheer, lightweight application.

- Use with glōShimmer brick and glōBronze

9249 RRP £28.00 **14** £14.00

**Kabuki**

Designed with a full head to achieve heavy coverage when applying powder base formulations.

- Use with glōPressed base, glōLoose base, glōBronze and glōFinishing powders

9250 RRP £26.00 **15** £13.00

**Liquid Foundation**

Taklon fibers allow for smooth, even application and easier cleaning after use with liquids or creams.

- Use with glōSheer tint base, glōProtective liquid foundation and face primer

9251 RRP £29.00 **16** £14.50



## Salon System Eye Lash Tinting

The finest quality crème eyelash tints manufactured for Salon System

It was developed to give eyes a natural radiant look that lasts several weeks without the need to apply mascara.

The Salon System tint is gentle and safe.

## Salon System Eyelash Tint Starter Kit



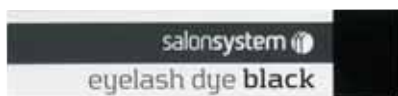
### Contents:

- 1 x 7.5ml Eyelash Tint Black
- 1 x 7.5ml Eyelash Tint Brown
- 1 x 7.5ml Eyelash Tint Blue
- 1 x 20ml Activating Solution
- 1 x Glass Mixing Dish
- 1 x 1 Tint Applicator Brush



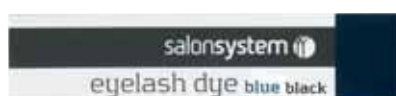
4888 Eyelash Tint Kit £17.00

## Salon System Eyelash Tint Black



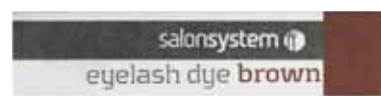
9627-BK Black 15ml £4.45

## Salon System Eyelash Tint Blue/Black



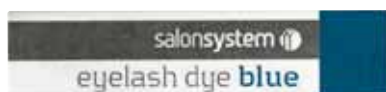
9627-BB Blue/Black 15ml £4.45

## Salon System Eyelash Tint Brown



9627-BR Brown 15ml £4.45

## Salon System Eyelash Tint Blue



9627-BL Blue 15ml £4.45

## Salon System Activating Solution



0135 Activating Solution 20ml £2.30

## Eyelash Tint Applicator Brush



0959 Tint Applicator Brush £2.00

## Combinal Tinting

### Combinal Black Tint



9400-BK Black 15ml £5.60

### Combinal Brown Tint



9400-BR Brown 15ml £5.60

### Combinal Blue Tint



9400-BL Blue 15ml £5.60

### Combinal Blue/Black Tint



9400-BB Blue/Black 15ml £5.60

### Protective Sheets



0960 Protective Sheets, pk/96 £3.60

### 10% Stabilised Peroxide

- Hydrogen peroxide is essential for perfect tinting results
- Peroxide is 5% vol (3%)



9405 Peroxide 20ml £2.75



## Hive Eyelash Tint Starter Kit



### Contains:

- 1 x 15ml Black Tint
- 1 x 15ml Blue/Black Tint
- 1 x 50ml Peroxide
- 96 x Protective Sheets
- 1 x 125ml Tint Stain Remover
- 1 x 70ml Petroleum Jelly
- 1 x Glass Mixing Dish
- 1 x Eyelash Tinting Brush
- 1 x Zipped Presentation Bag

## Hive Peroxide & Tint Stain Remover



- |      |                     |          |       |
|------|---------------------|----------|-------|
| 8824 | Peroxide 50ml       | <b>1</b> | £1.95 |
| 8826 | Stain Remover 125ml | <b>2</b> | £3.95 |

## Hive Eyelash Tint Black



• 15ml

8821 Black Buy 2 Get 1 FREE £9.00

## Hive Eyelash Tint Blue/Black



• 15ml

8822 Blue/Black Buy 2 Get 1 FREE £9.00

## Hive Eyelash Tint Brown



• 15ml

8823 Brown Buy 2 Get 1 FREE £9.00

## Petroleum Jelly



7884 Petroleum Jelly 100ml £2.75

## Hive Protective Sheets



8825 Protective Sheets, pk/96 £2.85

## Glass Dappen Dish



3876 Dappen Dish £0.95

## HairWell Eye Lash Tinting

Give your clients a whole new experience in permanent eyelash dyeing with Hairwell. Designed with your clients comfort in mind, this system is Europe and fully CE approved. 20ml tubes with full instructions for easy treatment.



### Lash Tint Black 20ml

• The dark standard dye

<b>Save More</b>	<b>1+</b>	<b>3+</b>	<b>6+</b>	<b>12+</b>
4897-BK Black	£2.99	£2.85	£2.69	£2.55

### Lash Tint Blue/Black 20ml

• The preferred choice for lashes

<b>Save More</b>	<b>1+</b>	<b>3+</b>	<b>6+</b>	<b>12+</b>
4897-BB Blue/Black	£2.99	£2.85	£2.69	£2.55

### Lash Tint Brown 20ml

• For not too dark colouration

<b>Save More</b>	<b>1+</b>	<b>3+</b>	<b>6+</b>	<b>12+</b>
4897-BR Brown	£2.99	£2.85	£2.69	£2.55

### Lash Tint Light Brown 20ml

• A soft Brown lustre

<b>Save More</b>	<b>1+</b>	<b>3+</b>	<b>6+</b>	<b>12+</b>
4897-LB Light Brown	£2.99	£2.85	£2.69	£2.55

### Lash Tint Graphite 20ml

• For blonde and male clients

<b>Save More</b>	<b>1+</b>	<b>3+</b>	<b>6+</b>	<b>12+</b>
4897-GR Graphite	£2.99	£2.85	£2.69	£2.55



## RefectoCil No. 1 Pure Black

- Tints any colour of eyelashes pure black to create voluminous, lengthened lashes



4907-PB Pure Black 15ml £4.35

## RefectoCil No. 2 Blue-Black

- Adds a lustrous blue glimmer to lashes, enhancing their colour depth and intensity



4907-BB Blue-Black 15ml £4.35

## RefectoCil No. 3 Natural Brown

- A dark and luxurious brown, offering a natural but full coverage for lashes and brows



4907-NB Natural Brown 15ml £4.35

## RefectoCil No. 4 Chestnut

- A rich, warm tint for use on blonde/light brown brows, used to create a harmonious look for clients with a similar hair colour



4910 Chestnut 15ml £4.45

## RefectoCil No. 1.1 Graphite

- A discrete covering for greying/white eyebrows



4907-GR Graphite 15ml £4.35

## RefectoCil No. 2.1 Deep Blue

- Effective only for light or blonde eyelashes, this daring blue tint will complement the most fashionable of make-up trends creating maximum expressions



4907-DB Deep Blue 15ml £4.35

## RefectoCil No. 3.1 Light Brown

- Perfect for the subtle enhancement of blond/light brown eyelashes and brows, for a truly natural look



4907-LB Light Brown 15ml £4.35

## RefectoCil No. 4.1 Red

- For the ultimate look, red hair can now be matched by red eyebrows, for a beautiful, fiery appearance



4914 Red 15ml £4.45

## RefectoCil Eye Protection Papers



- Protects the sensitive eyelids of the client by preventing the tint touching the skin

4915 Protection Papers, pk/96 £2.95

## RefectoCil Oxidant Liquid Developer

- RefectoCil Oxidant 3% liquid is a stabilised developer for RefectoCil eyelash and eyebrow tints



4917 Oxidant Liquid 50ml £3.25

## RefectoCil Creme Oxidant Developer

- This crème based developer, guarantees the perfect tinting result
- Sufficient for approximately 200 applications



4918 Creme Oxidant 100ml £6.05

## RefectoCil Application Sticks

- Soft sticks, designed for the perfect mixing of tints and thereafter, their precise application



4919 Application Sticks White Soft, pk/10 £2.35

## RefectoCil Glass Mixing Dish

- A specifically designed mixing dish with two grooves for the safe deposit of application stick



4921 Glass Mixing Dish £7.75

## Marvel-Lash

### Marvel-Lash Kit

Performs up to 50 treatments

**Contains:**

- 1 x 1000 Lashes 7mm
- 1 x 1000 Lashes 9mm
- 1 x 1000 Lashes 11mm
- 1 x 5ml Glue
- 1 x 15ml Remover
- 1 x Glue Ring + 10 disposable cups
- 10 x Micro-Applicators
- 5 x Gel Patches
- 1 x Straight Tweezer
- 1 x Tweezer X Type
- 1 x Disposable Gloves



**Potential Treatment Value Over £1,500**

0940 Salon Starter Kit **£66.00**

### Marvel-Lash Glue Ring

- New Marvel-Lash Glue Ring and 10 disposable cups is a brilliant new tool for quick, easy and hygienic lash application
- Simply place the ring onto your finger and put the adhesive into the cup
- Fits any size finger



8481 Marvel-Lash Glue Ring + 10 Cups **£3.50**

## Marvel-Lash Extra Volume Eyelash Extensions

• Approximately 620 Per Pack

4614-7 Black 7mm **£14.00**  
 4614-9 Black 9mm **£14.00**  
 4614-11 Black 11mm **£14.00**  
 4614-13 Black 13mm **£14.00**

9218 Silky Black **£17.95**  
 9219 Silky Colour **£17.95**  
 9220 Y Lash **£17.95**



### Marvel-Lash Micro Applicators



- For use when small amounts of liquid need to be accurately applied
- Ideal for Marvel-Lash removal and eyelash perm

0949 Applicator, pk/100 **£6.50**

### Marvel-Lash Glue



- Permanently bonds lash extensions to a natural lash quickly and effectively

8475 Glue 5ml **£14.50**

### Marvel-Lash Remover



- Lash remover for effective removal of Marvel-Lash lash extensions only

0945 Remover 15ml **£13.50**

### Marvel-Lash Tweezers



- Enables precision application and control
- Stainless Steel and autoclave safe

0950 Straight **£5.50**  
 0951 X-Type **£6.75**

### Marvel-Lash Mascara



- Specifically for extended lashes
- Water washable

0953 Mascara 8ml **£4.95**

### Marvel-Lash Anti-Wrinkle Gel Patches



- Protects the skin and lower lashes during eyelash extensions
- Conditions and moisturises the under eye area

0947 Gel Patches 10 pairs **£9.50**

### Marvel-Lash Eye Make-Up Remover Pads



- Use prior to application of eyelash extensions to prepare lashes for treatment
- Promotes extensions adhesion

0952 Make-Up Pads, pk/50 **£6.50**

## Lash Perm Salon Kit



**Contains:**

- 3 x 4ml Perming Lotion
- 3 x 4ml Fixing Lotion
- 3 x 4ml Nourishing Lotion
- 2 x 4ml Cleansing Lotion
- 2 x 5ml Adhesive
- 32 x Medium Curlers
- 32 x Large Curlers
- 1 x Instructions

0927 Lash Perm Salon Kit **£65.00**

## Lash Perm Student Kit



**Contains:**

- 1 x 4ml Perming Lotion
- 1 x 4ml Fixing Lotion
- 1 x 4ml Nourishing Lotion
- 1 x 4ml Cleansing Lotion
- 1 x 5ml Adhesive
- 8 x Small Curlers
- 8 x Medium Curlers
- 8 x Large Curlers
- 1 x Instructions

0928 Lash Perm Student Kit **£39.95**

## Perming Lotion



0929 Perming Lotion 4ml **£6.35**

## Fixing Lotion



0930 Fixing Lotion 4ml **£6.35**

## Nourishing Lotion



0931 Nourishing Lotion 4ml **£6.35**

## Eyelash Curlers - Small



0934 Curlers Small, pk/32 **£9.00**

## Eyelash Curlers - Medium



0935 Curlers Medium, pk/32 **£9.00**

## Eyelash Curlers - Large



0936 Curlers Large, pk/32 **£9.00**

## Lash Perm Cleansing Lotion



0933 Cleansing Lotion 60ml **£6.50**

## Lash Perm Adhesive



0937 Perm Adhesive 5ml **£12.95**

## Lash Perm Insulator



0938 Perm Insulator **£3.60**

## The Ultimate Lash Lift System

Lifts lashes right from the root helping enhance and emphasise the eyes whilst creating the illusion of length and volume that lasts for up to 8 weeks.

The system uses a unique silicone curler which lashes are adhered to before proceeding with a simple 3 step procedure-Perming, Fixing and Nourishing. Use alone or team up with Marvel-Lash semi permanent lashes for stunning dramatic effects.

**Contains:**

- 10 x Sachets of Perming lotion
- 10 x Sachets of Fixing Lotion
- 10 x Sachets of Nourishing Lotion
- 5 x Pairs Lash Lift Curlers Large
- 5 x Pairs Lash Lift Curlers Medium
- 1 x 5ml Adhesive
- 1 x Instructions



8483 Lash Lift System Kit £45.00

### Perming Lotion



Gentle and effective gel formulation for easy application. Individual sachets for complete hygiene and absolutely no wastage

8484 Perming Lotion, pk/15 £12.00

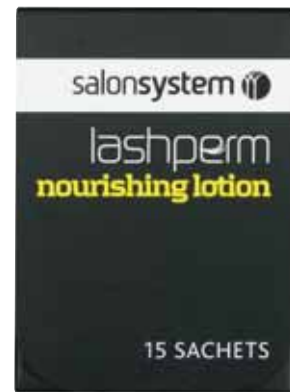
### Fixing Lotion



Gentle and effective gel formulation for easy application. Individual sachets for complete hygiene and absolutely no wastage

8485 Fixing Lotion, pk/15 £12.00

### Nourishing Lotion



Conditions and protects permed lashes. Individual sachets for complete hygiene and absolutely no wastage

8486 Nourishing Lotion, pk/15 £12.00

### Lash Lift Curlers



A unique silicone curler that lifts lashes from the root creating the illusion of length

8487 Curlers Medium, pk/10 £5.00

### Lash Lift Curlers



A unique silicone curler that lifts lashes from the root creating the illusion of length

8488 Curlers Large, pk/10 £5.00

### Lash Perm Adhesive



0937 Perm Adhesive 5ml £12.95

## Faster than Mascara, Pre-glued lashes

### PG 010 Black



4876-10 PG 010, pair £2.75

### PG 050 Black



4876-50 PG 050, pair £2.75

### PG 070 Black



4876-70 PG 070, pair £2.75

### PG 116 Black



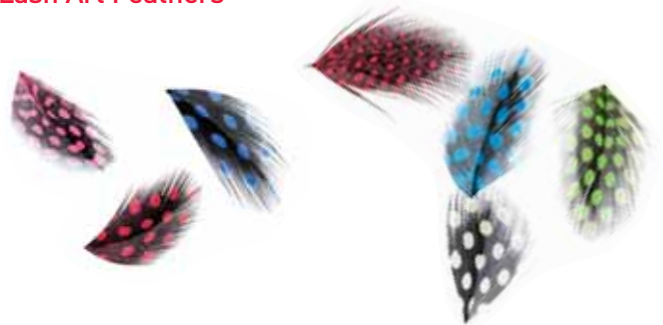
4876-16 PG 116, pair £2.75

### Lash Art Kit



9208 Lash Art Kit £15.95

### Lash Art Feathers



9210 Lash Art Feathers £4.75

## Boho Lash

### Boho-Bliss



9215 Bliss, pair £3.95

### Boho-Heaven



9216 Heaven, pair £4.15

### Boho-Ecstasy



9217 Ecstasy, pair £5.15

### Boho-Design



9214 Design, pair £3.95

### Boho-Classic



9213 Classic, pair £3.45

### Boho-Glam



8530 Glam, pair £3.95

### Boho-Dolly



8534 Dolly, pair £3.45

### Boho-Babe



8535 Babe, pair £3.45

101 Black



0962 101, pair £2.65

107 Black



0963 107, pair £2.65

116 Black



0964 116, pair £2.65

120 Black



0965 120, pair £2.65

140 Black



9212 140, pair £2.65

020 Black



0966 020, pair £2.65

100 Black



8536 100, pair £2.65

040 Black Underlash



8537 040, pair £2.65

070 Black



8538 070, pair £2.65

145 Black



9211 145, pair £2.95

Individual Lashes



0969 Black Mini £3.10  
0970 Black Short £3.10  
0971 Black Medium £3.10  
0972 Black Long £3.10

Individual Lashes – Ultra



- Unique bulb free that blend perfectly with the natural lash for the ultimate finish

0967 Black Short £3.25  
0968 Black Medium £3.25

Individual Lashes – Extensions Assorted



- Offers the user the ultimate in natural extensions – a 'single' lash to lengthen and thicken lashes
- Assorted Short, Medium, Long

0973 Extensions £3.25

Individual Lashes - Peel Off Strip



9205 Short £3.80  
9206 Medium £3.80  
9207 Long £3.80

Individual Lashes Student Kit

Contains:

- 1 x Black Multipack in Short, Medium & Long
- 1 x Brown Multipack in Short, Medium and Long
- 1 x Lash Adhesive 6ml
- 1 x Lash Remover and Tweezers



0977 Student Kit £11.05

Student Combi Kit

Contains:

- 1 x Black Multipack short, Medium & Long Individual Lashes
- 1 x 020 Black Strip Lashes & Glue
- 1 x Lash Adhesive 6ml
- 1 x Lash Remover and Tweezers



0978 Student Combi Kit £11.05

Individual Lash Remover

- A gentle but effective individual lash remove



0976 Lash Remover 60ml £3.35

Individual Lash Adhesive

- Quickly and effectively adheres individual lashes to natural lash



0974 Clear Adhesive 15ml £2.90

Individual Lash Adhesive

- Quickly and effectively adheres individual lashes to natural lash



0975 Black Adhesive 15ml £2.90





## Studex DC System Starter Kit

### Contains:

- 1 x Disposable Cartridge Ear Piercing Instrument
- 1 x Non Toxin Marking Pen
- 1 x Box Aftercare Solution (x12 x 50ml Bottles)
- 1 x Registration Book (15 pages)
- 12 x Medi Swabs/Antiseptic Wipes
- 1 x Ear Piercing Window Sticker
- 3 x Traditional Stainless Bezel April Crystal Studs
- 3 x Traditional Gold Plated Bezel April Crystals Studs
- 3 x Traditional Stainless Ball Studs
- 3 x Traditional Gold Plated Ball Studs



9168 Studex DC System Starter Kit £39.00

## Studex DC Instrument Kit

### Contains:

- 1 x Disposable Cartridge Ear Piercing Instrument
- 1 x Non Toxin Marking Pen
- 1 x 50ml Aftercare Solution
- 12 x Medi Swabs/Antiseptic Wipes
- 1 x Ear Piercing Window Sticker
- 1 x Studs



9169 Studex DC Instrument Kit £24.95

## Bezel Studs • Gold Plated



9172 Mini Assorted Birthstones Bezel, pk/12 £8.35  
 9173 Regular Assorted Birthstones Bezel, pk/12 £8.35

## Tiffany Studs



9170 Mini Assorted Birthstones Tiffany, pk/12 £11.50  
 9171 Regular Assorted Birthstones Tiffany, pk/12 £11.50

## Gold Plate Studs

### Rock Crystal Tiffany Gold Plate



9174 Regular, pk/12 £11.00

### Traditional Ball 24ct Gold Plate



9175 Regular, pk/12 £5.75  
 9176 Mini, pk/12 £5.75

### Star Shape 24ct Gold Plate



9177 Regular, pk/12 £8.35  
 9178 Mini, pk/12 £8.35

## Stainless and Titanium Studs

### Stainless Bezel Birthstones



9181 Regular, pk/12 £7.90  
 9182 Mini, pk/12 £7.90

### Stainless Traditional Ball



9179 Regular, pk/12 £5.20  
 9180 Mini, pk/12 £5.20

### Titanium Ball



9184 Regular Champagne, pair £2.00

### Titanium Polished Crystal



9185 Regular April Crystal, pair £2.10

## Accessories

### After Piercing Solution



9186 50ml, pk/12 £ 4.75

### Non Toxic Marking Pen



9187 Pen £1.19

### Registration Book



9188 100 Pages £4.75

### Piercing Display Board



9189 24 Item Display £10.25

## Teethwhite Kit

The Teethwhite Kit is a professional strength bleaching kit designed for salon and home use. Special formula is clinically proven to whiten teeth by up to 12 shades.

- It is completely safe as stains are removed with a gentle, non abrasive, action which breaks down stains trapped in the teeth's dentine into smaller particles which appear lighter in colour. This process leaves the tooth structure unchanged and will not damage the teeth in any way
- 10% Whitening Kit with an option of 6 or 15 treatments. Ideal for younger clients and those who experience sensitivity
- 16% Whitening Kit with an option of 6 or 15 treatments. Designed for clients that have no sensitivity and heavy staining
- Both strengths will eventually produce the same results but the stronger gel will get there quicker



### Contains:

- 2 x Heat Formed Mouthpieces
- 1 x Mouthpiece Case
- 1 x Instructions Guide

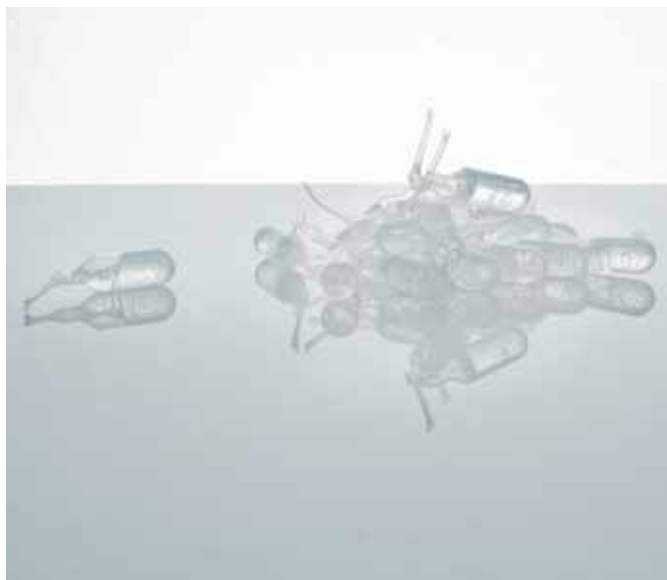
### 10% Teethwhite Kits

10957	10% Teethwhite Kit 6 Treatments	RRP £55.00	£33.00
10959	10% Teethwhite Kit 15 Treatments	RRP £74.00	£49.95

### 16% Teethwhite Kits

10958	16% Teethwhite Kit 6 Treatments	RRP £55.00	£38.00
10960	16% Teethwhite Kit 15 Treatments	RRP £79.00	£55.00

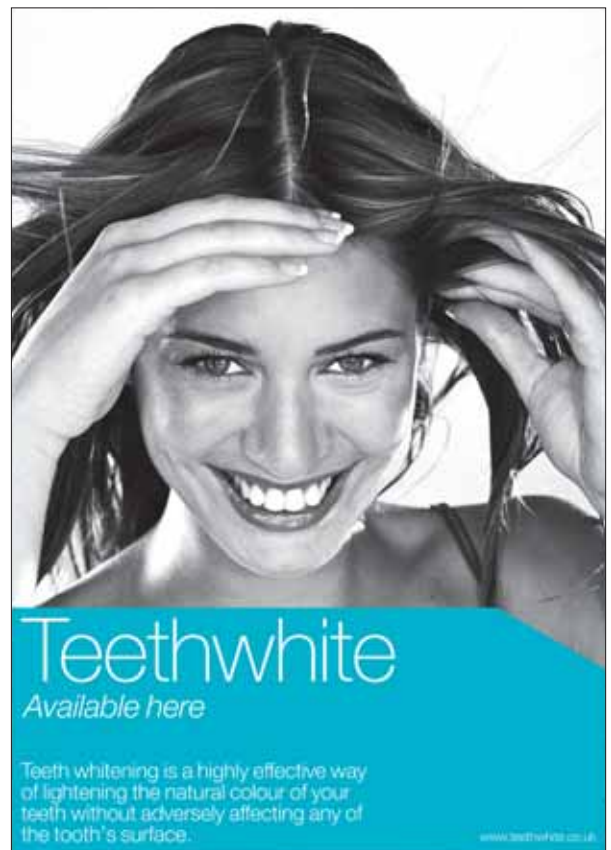
## Top Up Gel



- To maintain your new white smile we recommend that you wear your mouthpieces once a month using one of our top up packs
- Teethwhite top up packs of whitening gel contain 6 treatments of either 10% or 16% Carbamide Peroxide
- If you have sensitive teeth we recommend that you use the 10% strength

10961	6 x Vials 10% Top Up	RRP £25.00	£17.00
10962	6 x Vials 16% Top Up	RRP £32.00	£20.00

## Promotional Literature



8627	Teeth White A3 Poster	£2.00
8628	Teeth White Leaflets, pk/50	£4.00

